



Innovative Concepts
Where your dreams become reality



Network Management Software

Tel: +662 645 0014 Fax: +662 645 0013
sales@iconcepts.co.th www.iconcepts.co.th

Table of Content

Contents:

- Company Background
- Product Overview
- GIS System
- Network Topology Design
- Sales Management
- Circuit Management
- Network/Investment Planning
- Call Center Management

Company Background

- Registered under 'IConcepts Co., Ltd.' in Thailand in Sep 2003
- Achievements
 - 2009 Evaluated by an independent party and rank 1st SME software company in Thailand;
 - CMMI Level 3 Certified;
 - Winner of Thailand ICT Award 2005 and 2007;
 - 7 Microsoft Certified Professional (MCP) developers;
 - 1 Microsoft Most Valuable Professional (MVP); and
 - Expert in Agile and Extreme Programming Methodologies.
- Current products in Thailand
 - National Security Biometric Fingerprint;
 - Large-scale Enterprise Fingerprint Matching System;
 - Golf Course Management System;
 - Textile Profitability Analysis Software;
 - Premier School Management System;
 - Network Management Software;
 - Portal System Software;
 - SPA Management System; and
 - System Integration.



Table of Content

Contents:

- Company Background
- Product Overview
- GIS System
- Network Topology Design
- Sales Management
- Circuit Management
- Network/Investment Planning
- Call Center Management

Product Overview

- GIS map system that will interface with both Google Maps or Microsoft Virtual Earth, almost every features can be incorporated;
- GIS map will work online offline for both map and satellite view;
- Network management for multiple technology, Ethernet and TDM;
- Network topology design both network ring and TDM main and backup;
- Sales Team will have instant access to GIS coverage data as well as network capacity to provide customer real time quotation estimations;

Product Overview

- For the first time you are truly able to manage and understand the customer circuit configuration;
- Network planning and investment allows a virtual network to be setup and see what the projected cost of investment is and the ROI;
- Mobile real time interface units can provide customer service with real time up to date data to monitor any problems with the infrastructure; and
- Dozen's of reports to help management make informed decision on investment, capacity, and network efficiency.

Table of Content

Contents:

- Company Background
- Product Overview
- GIS System
- Network Topology Design
- Sales Management
- Circuit Management
- Network/Investment Planning
- Call Center Management

Table of Content

Contents:

- Company Background
- Product Overview
- GIS System
- Network Topology Design
- Sales Management
- Circuit Management
- Network/Investment Planning
- Call Center Management

Network Topology

- Infrastructure back bone can be planned and designed well in advance;
- Different network topologies can be created for different technologies;
- Viewing the hardware configuration is also possible; and
- Network diagram can be created at any size or complexity with zooming capability.

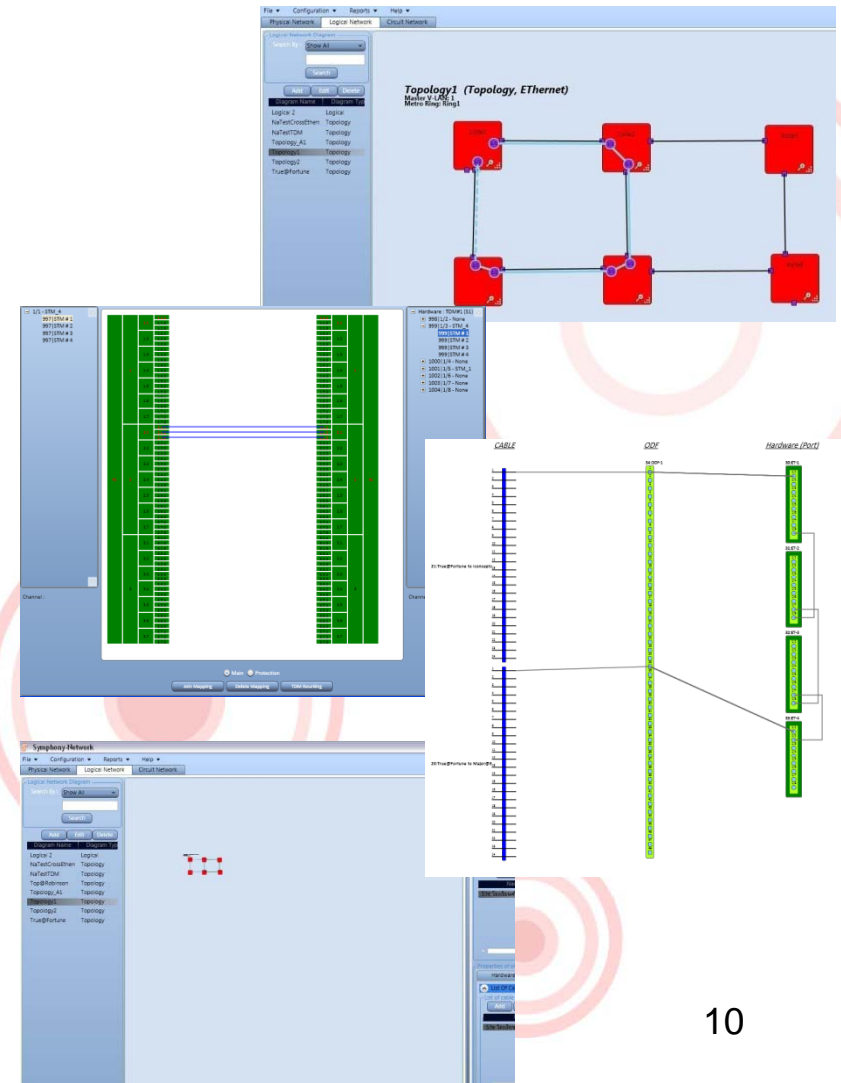


Table of Content

Contents:

- Company Background
- Product Overview
- GIS System
- Network Topology Design
- Sales Management
- Circuit Management
- Network/Investment Planning
- Call Center Management

Sales Management

- Sales can service potential customers with information on hand
 - Hardware capacity;
 - Hardware status;
 - Site and location;
- Location search can help sales identify customer site; and
- Able to provide customer rough quotation of cost based on network availability.

The screenshot displays a software interface for hardware management. The top window, titled 'Hardware Report', contains a search bar and a table with the following columns: Location, Site, Hardware, Circuit ID, Job ID, Total Port, Used, Remaining, Used Bandwidth, Total Bandwidth, and Hardware Status. The table lists various sites and their associated hardware configurations.

Location	Site	Hardware	Circuit ID	Job ID	Total Port	Used	Remaining	Used Bandwidth	Total Bandwidth	Hardware Status
Esplanade	Major@Esplanade	ET-1	TD01796	TD01796	8	1	7	0 kbps	0 kbps	●
		ET-2	TD01796	TD01796	8	0	8	0 kbps	0 kbps	●
		ET-1	TD01796	TD01796	8	1	7	0 kbps	0 kbps	●
		ET-2	TD01796	TD01796	8	0	8	0 kbps	0 kbps	●
Fortune	True@Fortune	ET-3	TD01796	TD01796	8	0	8	0 kbps	0 kbps	●
		ET-4	TD01796	TD01796	8	1	7	0 kbps	0 kbps	●
		ET-3	TD01796	TD01796	8	0	8	0 kbps	0 kbps	●
Loc_1	Aop_Site1	E#1	TD01796	TD01796	6	0	6	0 kbps	0 kbps	●
Loc_2	Aop_Site2	E#2	TD01796	TD01796	6	0	6	0 kbps	0 kbps	●
		E#3	TD01796	TD01796	0	0	0	0 kbps	0 kbps	●
		E_A1	TD01796	TD01796	8	1	7	0 kbps	0 kbps	●
Locat1	Site_A1	E_A1_2	TD01796	TD01796	8	1	7	0 kbps	0 kbps	●
		E_A2	TD01796	TD01796	8	2	6	0 kbps	0 kbps	●
Locat2	Site_A2	E_A2	TD01796	TD01796	8	2	6	0 kbps	0 kbps	●
Locat3	Site_A3	E_A3	TD01796	TD01796	8	2	6	0 kbps	0 kbps	●
Locat4	Site_A4	E_A4	TD01796	TD01796	8	2	6	0 kbps	0 kbps	●
Locat5	Site_A5	E_A5	TD01796	TD01796	8	2	6	0 kbps	0 kbps	●
Locat6	Site_A6	E_A6	TD01796	TD01796	8	2	6	0 kbps	0 kbps	●
Location1	Site1	Ethernet1	TD01796	TD01796	4	3	1	0 kbps	0 kbps	●
Location2	site2	E2	TD01796	TD01796	4	3	1	0 kbps	0 kbps	●
Location3	site3	E3	TD01796	TD01796	4	2	2	0 kbps	0 kbps	●
Location4	site4	E4	TD01796	TD01796	8	2	6	0 kbps	0 kbps	●
		E5	TD01796	TD01796	8	3	5	0 kbps	0 kbps	●

The bottom window shows a map of Bangkok with a search window open. The search window has a 'Keyword' field containing 'National Stadium' and a 'Search' button. Below the search bar is a 'Routing' section with a list of addresses and their coordinates. The first result is 'Wang Mai, Bangkok, Thailand (National Stadium BTS Station)' with coordinates @13.733215,100.501699. Other results include 'Vista National Stadium', 'National stadium', '國立體育館 National Stadium', 'National Stadium, Bangkok: 14th September 2008', 'BTS 國立競技場 (BTS National Stadium)', 'MBK Shopping Mall at Night', 'View to the National Stadium', and 'Street soccer by National Stadium'.

Table of Content

Contents:

- Company Background
- Product Overview
- GIS System
- Network Topology Design
- Sales Management
- Circuit Management
- Network/Investment Planning
- Call Center Management

Circuit Management

- Now you have all circuit diagrams with routing at your fingertips;
- Managing your network for planned schedule maintenance is easy;
- Provide customer on implementation status with job management integration;
- Incorporate topology to ensure reuse of complex network configuration; and
- Have detailed information such as number of nodes, sites, ports, and hardware.

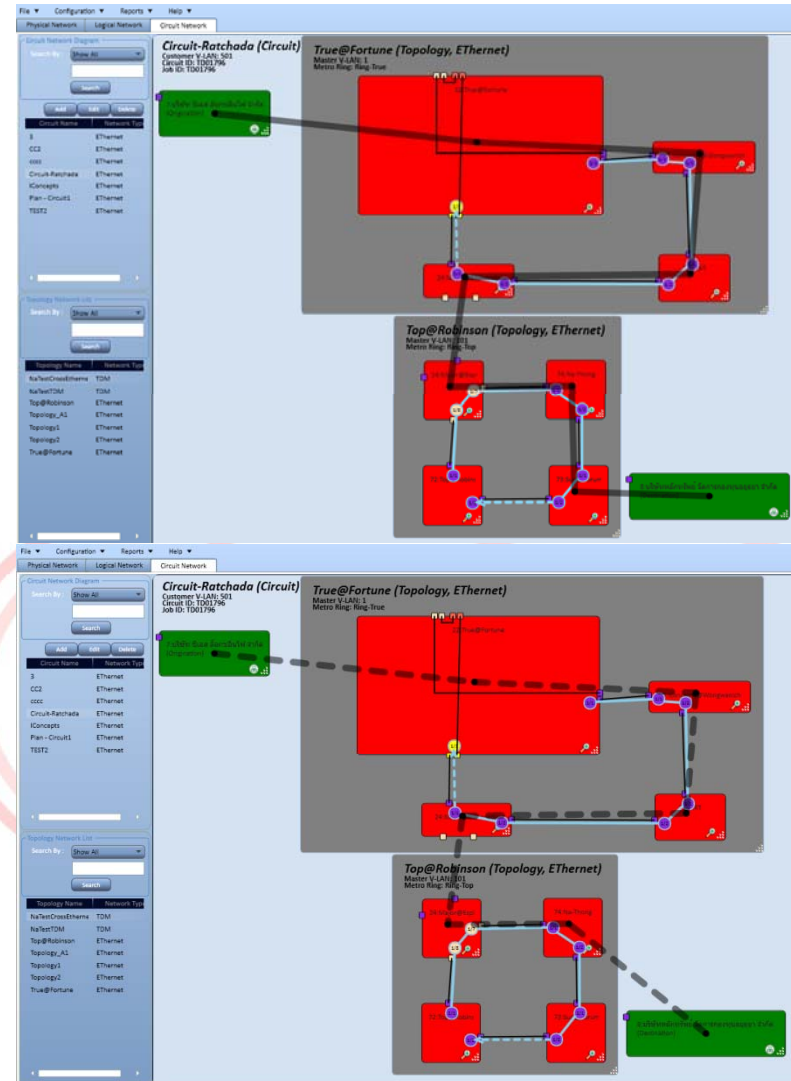


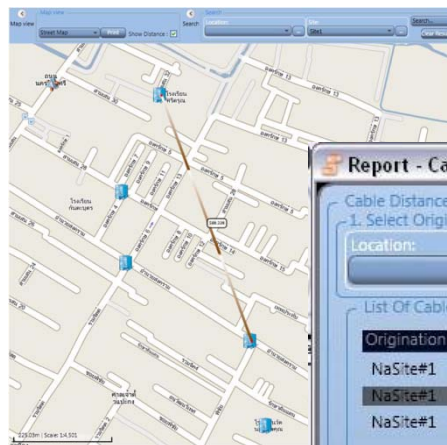
Table of Content

Contents:

- Company Background
- Product Overview
- GIS System
- Network Topology Design
- Sales Management
- Circuit Management
- Network/Investment Planning
- Call Center Management

Network Planning

- Planning to invest in new cable, the distance and actual distance can be calculated;
- Planning to create new infrastructure back bone; and
- Auto routing will help you find different possible routes.



Report - Cable Distance

Cable Distance

1. Select Origination Site

Location: Site: NaSite#1

2. Select Destination Site

Location:

List Of Cable

Origination	Destination	Cable Distance(M)	Actual Distance(M)	Cable Path
NaSite#1	NaSitePD1	561.81	561.81	[NaSite#1]->[NaSite#1 to BJ_PDH#1]->[BJ_PD
NaSite#1	NaSite#4	1,597.43	1,597.43	[NaSite#1]->[NaSite#1 to NaBJ#4]->[NaBJ#4]
NaSite#1	NaSite#2	1,777.09	1,776.06	[NaSite#1]->[NaSite#1 to NaBJ#1]->[NaBJ#1]

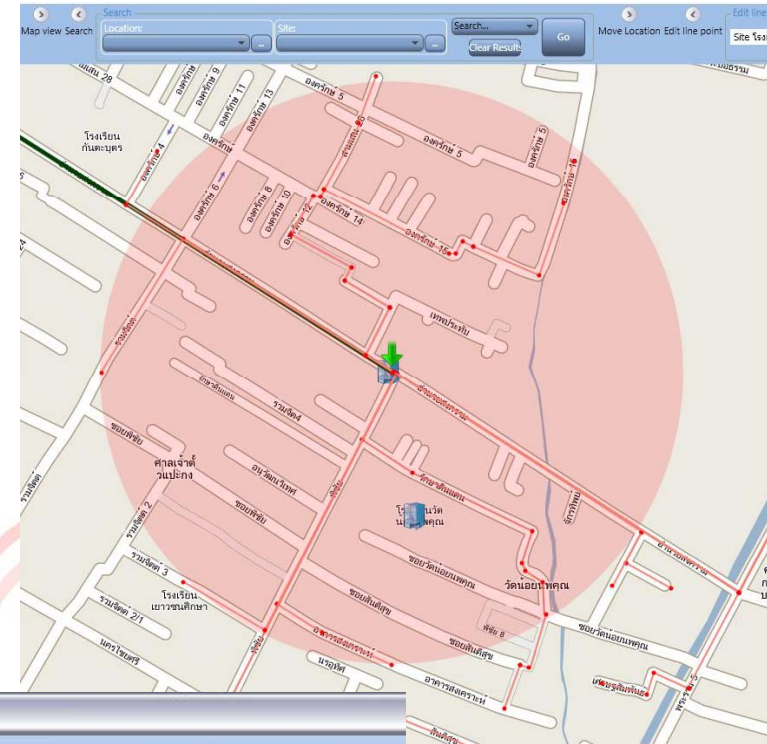


Table of Content

Contents:

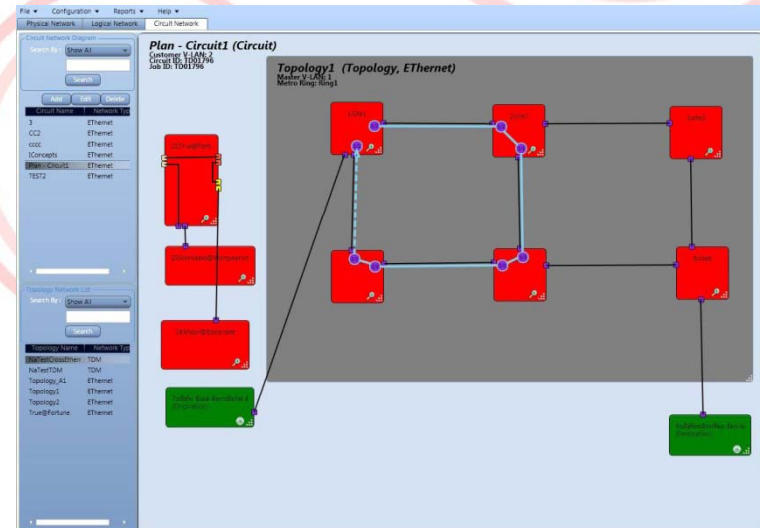
- Company Background
- Product Overview
- GIS System
- Network Topology Design
- Sales Management
- Circuit Management
- Network/Investment Planning
- Call Center Management

Call Center Management

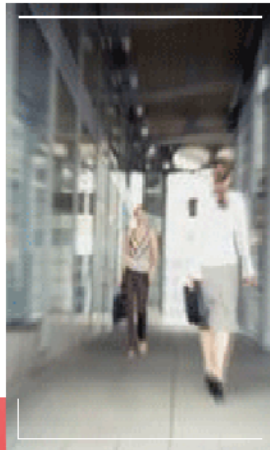
- Mobile roving units
 - Laptop or PDA can update hardware status and site location based on GPS
 - Technicians can update onsite back to the main system
 - Can work online or offline for remote areas.
- Call centers can view impact report to identify customer problems; and
- Call center staff can now know exact circuit routing and can communicate with customers.

V-LAN	Topology	Port	Hardware	Site	Max Bandwidth	Used Bandwidth	Circuit Id	Job Id
1		1/1	Ethernet1	Site1	1,024 Kb/s	5,150 Kb/s	TD01796	TD01796
1		1/2	Ethernet1	Site1	1,024 Kb/s	3,072 Kb/s	TD01796	TD01796
1		1/2	E2	Site2	1,024 Kb/s	3,072 Kb/s	TD01796	TD01796
1		1/3	E2	Site2	1,024 Kb/s	3,072 Kb/s	TD01796	TD01796
1		1/1	E5	Site5	1,024 Kb/s	3,072 Kb/s	TD01796	TD01796
1		1/3	E5	Site5	1,024 Kb/s	3,072 Kb/s	TD01796	TD01796
1		1/1	E4	Site4	1,024 Kb/s	3,072 Kb/s	TD01796	TD01796
1		1/2	E4	Site4	1,024 Kb/s	3,072 Kb/s	TD01796	TD01796
1		1/1	E_A1	Site_A1	512 Kb/s	0 Kb/s	TD01796	TD01796
1		1/3	E_A1	Site_A1	512 Kb/s	0 Kb/s	TD01796	TD01796
1		1/3	E_A1	Site_A1	512 Kb/s	0 Kb/s	TD01796	TD01796
1		1/1	E_A2	Site_A2	512 Kb/s	0 Kb/s	TD01796	TD01796
1		1/2	E_A2	Site_A2	512 Kb/s	0 Kb/s	TD01796	TD01796
1		1/1	E_A3	Site_A3	512 Kb/s	0 Kb/s	TD01796	TD01796
1		1/2	E_A3	Site_A3	512 Kb/s	0 Kb/s	TD01796	TD01796
1		1/1	E_A4	Site_A4	512 Kb/s	0 Kb/s	TD01796	TD01796
1		1/2	E_A4	Site_A4	512 Kb/s	0 Kb/s	TD01796	TD01796
1		1/1	E_A5	Site_A5	512 Kb/s	0 Kb/s	TD01796	TD01796
1		1/2	E_A5	Site_A5	512 Kb/s	0 Kb/s	TD01796	TD01796
1		1/1	E_A6	Site_A6	512 Kb/s	0 Kb/s	TD01796	TD01796
1		1/2	E_A6	Site_A6	512 Kb/s	0 Kb/s	TD01796	TD01796
1		1/4	E_A1_2	Site_A1	512 Kb/s	0 Kb/s	TD01796	TD01796
1		1/3	E_A1_2	Site_A1	512 Kb/s	0 Kb/s	TD01796	TD01796
1		1/1	E2	Site2	1,024 Kb/s	0 Kb/s	TD01796	TD01796
1		1/3	E2	Site2	1,024 Kb/s	3,072 Kb/s	TD01796	TD01796

Slot/Port/Core Of ODF	ODF Name	Core Name	Cable Name	Used Bandwidth	Max Bandwidth	Port Status	
1/1	25 - 26	ODF-1	1 - 2	True@Fortune to Major@Esplanade	0 kbps	0 kbps	●
1/2					0 kbps	0 kbps	●
1/3					0 kbps	0 kbps	●
1/4					0 kbps	0 kbps	●
1/5					0 kbps	0 kbps	●
1/6					0 kbps	0 kbps	●
1/7					0 kbps	0 kbps	●
1/8					0 kbps	0 kbps	●



Contact Us



Innovative Concepts

Where your dream become reality

IConcepts Co., Ltd.

100/99 Vongvanij Complex Building B
29 Fl., Rama IX Rd., Huaykwang
Bangkok , Thailand 10320

Contact Person: Nattida Sanguansin

Tel: +662 645 0014

Mobile: +66 81 339 7791

Fax: +662 645 0013

Email: sales@iconcepts.co.th

www.iconcepts.co.th